

**ACCESORIOS DE ACERO**

**MARZO 2010**

# ACCESORIOS DE ACERO PARA SOL



## CURVAS 3D EN 10253-1 - Acero S235

Dimensiones		45°		90°		90° con soldadura		180°	
Pulgadas	Diám. ext. x Espesor	Referencia	€	Referencia	€	Referencia	€	Referencia	€
1/2"	21,3 x 2,0	C3450021	<b>1,02</b>	C3XXXX21	<b>1,02</b>			C3180021	<b>2,55</b>
3/4"	26,9 x 2,3	C3450027	<b>1,02</b>	C3XXXX27	<b>1,02</b>	C3HXXX27	<b>0,87</b>	C3180027	<b>2,55</b>
	30,0 x 2,6			C3XXXX30	<b>1,89</b>				
1"	33,7 x 2,6	C3450033	<b>1,02</b>	C3XXXX33	<b>1,02</b>	C3HXXX33	<b>0,87</b>	C3180033	<b>2,55</b>
	38,0 x 2,6			C3XXXX38	<b>1,85</b>				
1" 1/4	42,4 x 2,6	C3450042	<b>1,33</b>	C3XXXX42	<b>1,33</b>	C3HXXX42	<b>1,13</b>	C3180042	<b>3,33</b>
	44,5 x 2,6			C3XXXX44	<b>1,95</b>				
1" 1/2	48,3 x 2,6	C3450048	<b>1,65</b>	C3XXXX48	<b>1,65</b>	C3HXXX48	<b>1,40</b>	C3180048	<b>4,13</b>
	51,0 x 2,6			C3XXXX51	<b>3,23</b>				
	54,0 x 2,6			C3XXXX54	<b>3,36</b>				
	57,0 x 2,9			C3XXXX57	<b>3,48</b>				
2"	60,3 x 2,9	C3450060	<b>2,50</b>	C3XXXX60	<b>2,59</b>	C3HXXX60	<b>2,20</b>	C3180060	<b>6,25</b>
	70,0 x 2,9			C3XXXX70	<b>4,45</b>				
2" 1/2	76,1 x 2,9	C3450076	<b>4,00</b>	C3XXXX76	<b>4,42</b>	C3HXXX76	<b>3,76</b>	C3180076	<b>11,05</b>
3"	88,9 x 3,2	C3450089	<b>6,36</b>	C3XXXX89	<b>6,41</b>	C3HXXX89	<b>5,44</b>	C3180089	<b>16,02</b>
3" 1/2	101,6 x 3,6	C3450101	<b>9,41</b>	C3XXX101	<b>10,35</b>	C3HXX101	<b>8,80</b>	C3180101	<b>25,87</b>
	108,0 x 3,6			C3XXX108	<b>11,22</b>				
4"	114,3 x 3,6	C3450114	<b>10,52</b>	C3XXX114	<b>11,56</b>	C3HXX114	<b>9,82</b>	C3180114	<b>28,90</b>
4" 1/2	133,0 x 4,0			C3XXX133	<b>20,13</b>				
5"	139,7 x 4,0	C3450139	<b>18,15</b>	C3XXX139	<b>19,58</b>	C3HXX139	<b>16,64</b>	C3180139	<b>48,95</b>
	159,0 x 4,5			C3XXX159	<b>28,98</b>				
6"	168,3 x 4,5	C3450168	<b>27,63</b>	C3XXX168	<b>28,63</b>	C3HXX168	<b>24,33</b>	C3180168	<b>80,15</b>
7"	193,7 x 5,6	C3450193	<b>60,33</b>	C3XXX193	<b>64,66</b>				
8"	219,1 x 6,3	C3450219	<b>56,74</b>	C3XXX219	<b>68,24</b>	C3HXX219	<b>58,00</b>		
9"	244,5 x 6,3			C3XXX244	<b>157,93</b>				
10"	273,0 x 6,3	C3450273	<b>99,38</b>	C3XXX273	<b>117,70</b>	C3HXX273	<b>100,04</b>		
12"	323,9 x 7,1			C3XXX324	<b>151,90</b>				
14"	355,6 x 8,0			C3XXX355	<b>342,33</b>				
16"	406,4 x 8,8			C3XXX406	<b>368,63</b>				
18"*	457,2 x 10,0			C3XXX457	<b>829,60</b>				
20"*	508,0 x 11,0			C3XXX508	<b>1281,00</b>				
24"*	609,6 x 12,5			C3XXX609	<b>2226,50</b>				

\* Curvas DIN 2605 St 37.0

Disponibles galvanizadas en caliente. Consultar precios.

## CURVAS 5D EN 10253-1 - Acero S235



Dimensiones		45°		90°		180°	
Pulgadas	Diám. ext. x Espesor	Referencia	€	Referencia	€	Referencia	€
1/2"	21,3 x 2,0	C5450021	<b>2,35</b>	C5XXXX21	<b>2,35</b>		
3/4"	26,9 x 2,3	C5450027	<b>2,35</b>	C5XXXX27	<b>2,35</b>	C5180027	<b>5,88</b>
1"	33,7 x 2,6	C5450033	<b>2,48</b>	C5XXXX33	<b>2,48</b>	C5180033	<b>6,20</b>
1" 1/4	42,4 x 2,6	C5450042	<b>3,35</b>	C5XXXX42	<b>3,35</b>	C5180042	<b>8,38</b>
1" 1/2	48,3 x 2,6	C5450048	<b>3,84</b>	C5XXXX48	<b>3,84</b>	C5180048	<b>9,60</b>
2"	60,3 x 2,9	C5450060	<b>5,86</b>	C5XXXX60	<b>5,86</b>	C5180060	<b>14,65</b>
	70,0 x 2,9			C5XXXX70	<b>12,04</b>		
2" 1/2	76,1 x 2,9	C5450076	<b>8,20</b>	C5XXXX76	<b>9,03</b>	C5180076	<b>22,58</b>
3"	88,9 x 3,2	C5450089	<b>12,26</b>	C5XXXX89	<b>13,33</b>	C5180089	<b>33,33</b>
3" 1/2	101,6 x 3,6	C5450101	<b>23,40</b>	C5XXX101	<b>23,40</b>		
	108,0 x 3,6			C5XXX108	<b>31,11</b>		
4"	114,3 x 3,6	C5450114	<b>24,45</b>	C5XXX114	<b>27,84</b>	C5180114	<b>60,50</b>
4" 1/2	133,0 x 4,0			C5XXX133	<b>73,81</b>		
5"	139,7 x 4,0			C5XXX139	<b>53,68</b>		
	159,0 x 4,5			C5XXX159	<b>87,84</b>		
6"	168,3 x 4,5			C5XXX168	<b>79,30</b>		
8"	219,1 x 6,3			C5XXX219	<b>186,51</b>		
10"	273,0 x 6,3			C5XXX273	<b>366,01</b>		
12"	323,9 x 7,1			C5XXX324	<b>546,41</b>		

Disponibles galvanizadas en caliente. Consultar precios.

# ACCESORIOS DE ACERO PARA SOL



## CAPS

EN 10253-1- Acero S235

Referencia	Pulgadas	Diam. ext.	Espesor	€	Referencia	Pulgadas	Diam. ext.	Espesor	€
CCXXXX27	3/4"	26,9	2,3	<b>0,59</b>	CCXXX114	4"	114,3	3,6	<b>4,39</b>
CCXXXX34	1"	33,7	2,6	<b>0,59</b>	CCXXX140	5"	139,7	4,0	<b>6,80</b>
CCXXXX42	1" 1/4	42,4	2,6	<b>0,63</b>	CCXXX168	6"	168,3	4,5	<b>11,76</b>
CCXXXX48	1" 1/2	48,3	2,6	<b>0,71</b>	CCXXX219	8"	219,1	6,3	<b>16,21</b>
CCXXXX60	2"	60,3	2,9	<b>0,73</b>	CCXXX273	10"	273,0	6,3	<b>29,25</b>
CCXXXX76	2" 1/2	76,1	2,9	<b>1,25</b>	CCXXX324	12"	323,9	7,1	<b>37,12</b>
CCXXXX89	3"	88,9	3,2	<b>1,59</b>	CCXXX356	14"	355,6	8,0	<b>81,70</b>
CCXXX101	3" 1/2	101,6	3,6	<b>2,51</b>	CCXXX406	16"	406,4	8,8	<b>110,14</b>

Disponibles galvanizadas en caliente. Consultar precios.



## TES

EN 10253-1- Acero S235

Referencia	Pulgadas	Diam. ext.	Espesor	€	Referencia	Pulgadas	Diam. ext.	Espesor	€
CTDXXX21	1/2"	21,3	2,0	<b>2,85</b>	CTDXX114	4"	114,3	3,6	<b>22,82</b>
CTDXXX27	3/4"	26,9	2,3	<b>2,85</b>	CTDXX139	5"	139,7	4,0	<b>35,50</b>
CTDXXX33	1"	33,7	2,6	<b>3,87</b>	CTDXX168	6"	168,3	4,5	<b>45,78</b>
CTDXXX42	1 1/4"	42,4	2,6	<b>4,37</b>	CTDXX219	8"	219,1	6,3	<b>107,19</b>
CTDXXX48	1 1/2"	48,3	2,6	<b>5,36</b>	CTDXX273	10"	273,0	6,3	<b>183,01</b>
CTDXXX60	2"	60,3	2,9	<b>6,51</b>	CTDXX323	12"	323,9	7,1	<b>261,44</b>
CTDXXX76	2 1/2"	76,1	2,9	<b>13,83</b>	CTDXX355	14"	355,6	8,0	<b>379,08</b>
CTDXXX89	3"	88,9	3,2	<b>15,63</b>	CTDXX406	16"	406,4	8,8	<b>496,73</b>
CTDXX101	3 1/2"	101,6	3,6	<b>23,66</b>					

Disponibles galvanizadas en caliente. Consultar precios.



## REDUCCIONES CONCÉNTRICAS EN 10253-1 - ACERO S235

Referencia	Pulgadas	Diam. ext.	Espesor	€	Referencia	Pulgadas	Diam. ext.	Espesor	€
CRXX2721	3/4" x 1/2"	26,9 x 21,3	2,3 - 2,0	<b>2,49</b>	CRX13960	5" x 2"	139,7 x 60,3	4,0 - 2,9	<b>19,00</b>
CRXX3321	1" x 1/2"	33,7 x 21,3	2,6 - 2,0	<b>2,48</b>	CRX13976	5" x 2 1/2"	139,7 x 76,1	4,0 - 2,9	<b>15,69</b>
CRXX3327	1" x 3/4"	33,7 x 26,9	2,6 - 2,3	<b>2,25</b>	CRX13989	5" x 3"	139,7 x 88,9	4,0 - 3,2	<b>14,12</b>
CRXX4221	1 1/4" x 1/2"	42,4 x 21,3	2,6 - 2,0	<b>4,21</b>	CR139101	5" x 3 1/2"	139,7 x 101,6	4,0 - 3,6	<b>18,82</b>
CRXX4227	1 1/4" x 3/4"	42,4 x 26,9	2,6 - 2,3	<b>2,80</b>	CR139108	5" x 3 3/4"	139,7 x 108,0	4,0 - 3,6	<b>18,30</b>
CRXX4233	1 1/4" x 1"	42,4 x 33,7	2,6 - 2,6	<b>2,46</b>	CR139114	5" x 4"	139,7 x 114,3	4,0 - 3,6	<b>13,07</b>
CRXX4821	1 1/2" x 1/2"	48,3 x 21,3	2,6 - 2,0	<b>5,59</b>	CRX15989	5 1/2" x 3"	159,0 x 88,9	4,5 - 3,2	<b>23,18</b>
CRXX4827	1 1/2" x 3/4"	48,3 x 26,9	2,6 - 2,3	<b>3,61</b>	CR159108	5 1/2" x 3 3/4"	159,0 x 108,0	4,5 - 3,6	<b>21,96</b>
CRXX4833	1 1/2" x 1"	48,3 x 33,7	2,6 - 2,6	<b>2,98</b>	CR159114	5 1/2" x 4"	159,0 x 114,3	4,5 - 3,6	<b>20,13</b>
CRXX4842	1 1/2" x 1 1/4"	48,3 x 42,4	2,6 - 2,6	<b>2,51</b>	CR159133	5 1/2" x 4 1/2"	159,0 x 133,0	4,5 - 4,0	<b>18,91</b>
CRXX6027	2" x 3/4"	60,3 x 26,9	2,9 - 2,3	<b>6,10</b>	CR159139	5 1/2" x 5"	159,0 x 139,7	4,5 - 4,0	<b>18,91</b>
CRXX6033	2" x 1"	60,3 x 33,7	2,9 - 2,6	<b>4,05</b>	CRX16876	6" x 2 1/2"	168,3 x 76,1	4,5 - 2,9	<b>24,40</b>
CRXX6042	2" x 1 1/4"	60,3 x 42,4	2,9 - 2,6	<b>3,74</b>	CRX16889	6" x 3"	168,3 x 88,9	4,5 - 3,2	<b>21,44</b>
CRXX6048	2" x 1 1/2"	60,3 x 48,3	2,9 - 2,6	<b>3,14</b>	CR168114	6" x 4"	168,3 x 114,3	4,5 - 3,6	<b>18,30</b>
CRXX7633	2 1/2" x 1"	76,1 x 33,7	2,9 - 2,6	<b>10,00</b>	CR168139	6" x 5"	168,3 x 139,7	4,5 - 4,0	<b>16,08</b>
CRXX7642	2 1/2" x 1 1/4"	76,1 x 42,4	2,9 - 2,6	<b>5,23</b>	CR193114	7" x 4"	193,7 x 114,3	5,6 - 3,6	<b>39,65</b>
CRXX7648	2 1/2" x 1 1/2"	76,1 x 48,3	2,9 - 2,6	<b>4,71</b>	CR193133	7" x 4 1/2"	193,7 x 133,0	5,6 - 4,0	<b>37,82</b>
CRXX7660	2 1/2" x 2"	76,1 x 60,3	2,9 - 2,9	<b>4,13</b>	CR193159	7" x 5 1/2"	193,7 x 159,0	5,6 - 4,5	<b>35,99</b>
CRXX8942	3" x 1 1/4"	88,9 x 42,4	3,2 - 2,6	<b>8,85</b>	CR193168	7" x 6"	193,7 x 168,3	5,6 - 4,5	<b>35,38</b>
CRXX8948	3" x 1 1/2"	88,9 x 48,3	3,2 - 2,6	<b>6,93</b>	CR219114	8" x 4"	219,1 x 114,3	6,3 - 3,6	<b>35,99</b>
CRXX8960	3" x 2"	88,9 x 60,3	3,2 - 2,9	<b>5,49</b>	CR219133	8" x 4 1/2"	219,1 x 133,0	6,3 - 4,0	<b>35,38</b>
CRXX8976	3" x 2 1/2"	88,9 x 76,1	3,2 - 2,9	<b>4,97</b>	CR219139	8" x 5"	219,1 x 139,7	6,3 - 4,0	<b>33,99</b>
CRX10160	3 1/2" x 2"	101,6 x 60,3	3,6 - 2,9	<b>9,48</b>	CR219159	8" x 5 1/2"	219,1 x 159,0	6,3 - 4,5	<b>34,16</b>
CRX10176	3 1/2" x 2 1/2"	101,6 x 76,1	3,6 - 2,9	<b>8,35</b>	CR219168	8" x 6"	219,1 x 168,3	6,3 - 4,5	<b>31,37</b>
CRX10189	3 1/2" x 3"	101,6 x 88,9	3,6 - 3,2	<b>7,36</b>	CR273139	10" x 5"	273,0 x 139,7	6,3 - 4,0	<b>70,76</b>
CRX10860	3 3/4" x 2"	108,0 x 60,3	3,6 - 2,9	<b>11,29</b>	CR273168	10" x 6"	273,0 x 168,3	6,3 - 4,5	<b>50,59</b>
CRX10876	3 3/4" x 2 1/2"	108,0 x 76,1	3,6 - 2,9	<b>9,27</b>	CR273219	10" x 8"	273,0 x 219,1	6,3 - 6,3	<b>47,97</b>
CRX10889	3 3/4" x 3"	108,0 x 88,9	3,6 - 3,2	<b>7,99</b>	CR323168	12" x 6"	323,9 x 168,3	7,1 - 4,5	<b>89,06</b>
CRX11448	4" x 1 1/2"	114,3 x 48,3	3,6 - 2,6	<b>12,44</b>	CR323219	12" x 8"	323,9 x 219,1	7,1 - 6,3	<b>76,86</b>
CRX11460	4" x 2"	114,3 x 60,3	3,6 - 2,9	<b>9,15</b>	CR323273	12" x 10"	323,9 x 273,0	7,1 - 6,3	<b>74,42</b>
CRX11470	4" x 2 1/4"	114,3 x 70,0	3,6 - 2,9	<b>8,78</b>	CR355219	14" x 8"	355,6 x 219,1	8,0 - 6,3	<b>150,06</b>
CRX11476	4" x 2 1/2"	114,3 x 76,1	3,6 - 2,9	<b>8,37</b>	CR355273	14" x 10"	355,6 x 273,0	8,0 - 6,3	<b>145,18</b>
CRX11489	4" x 3"	114,3 x 88,9	3,6 - 3,2	<b>7,84</b>	CR355323	14" x 12"	355,6 x 323,9	8,0 - 7,1	<b>143,96</b>
CR114101	4" x 3 1/2"	114,3 x 101,6	3,6 - 3,6	<b>7,81</b>	CR406273	16" x 10"	406,4 x 273,0	8,8 - 6,3	<b>212,28</b>
CRX13376	4 1/2" x 2 1/2"	133,0 x 76,1	4,0 - 2,9	<b>18,54</b>	CR406323	16" x 12"	406,4 x 323,9	8,8 - 7,1	<b>198,86</b>
CRX13389	4 1/2" x 3"	133,0 x 88,9	4,0 - 3,2	<b>16,21</b>	CR406355	16" x 14"	406,4 x 355,6	8,8 - 8,0	<b>191,54</b>
CR133101	4 1/2" x 3 1/2"	133,0 x 101,6	4,0 - 3,6	<b>15,92</b>					
CRX133108	4 1/2" x 3 3/4"	133,0 x 108,0	4,0 - 3,6	<b>13,81</b>					
CR133114	4 1/2" x 4"	133,0 x 114,3	4,0 - 3,6	<b>13,55</b>					

Disponibles galvanizadas en caliente. Consultar precios.

# ACCESORIOS DE ACERO PARA SOL

## CURVAS LR 90°

ASTM A-234 WPB  
ASME B 16.9 STD

Referencia	Pulgadas	Dimensiones Diám. ext. x Espesor	€
CSTL900M	1/2"	21,3 x 2,77	2,24
CSTL900T	3/4"	26,7 x 2,87	2,25
CSTL9001	1"	33,4 x 3,38	2,27
CSTL901C	1 1/4"	42,2 x 3,56	2,34
CSTL901M	1 1/2"	48,3 x 3,68	2,49
CSTL9002	2"	60,3 x 3,91	3,46
CSTL902M	2 1/2"	73,0 x 5,16	6,02
CSTL9003	3"	88,9 x 5,49	9,18
CSTL903M	3 1/2"	101,6 x 5,74	12,82
CSTL9004	4"	114,3 x 6,02	15,80
CSTL9005	5"	141,3 x 6,55	27,99
CSTL9006	6"	168,3 x 7,11	38,27
CSTL9008	8"	219,1 x 8,18	79,21
CSTL9010	10"	273,0 x 9,27	145,08
CSTL9012	12"	323,8 x 9,53	214,77
CSTL9014	14"	355,6 x 9,53	298,16
CSTL9016	16"	406,4 x 9,53	403,90
CSTL9018	18"	457,0 x 9,53	544,22
CSTL9020	20"	508,0 x 9,53	714,25
CSTL9024	24"	610,0 x 9,53	998,00



## CAPS

ASTM A-234 WPB  
ASME B 16.9 STD

Referencia	Pulgadas	Dimensiones Diám. ext. x Espesor	€
CCSTXX0M	1/2"	21,3 x 2,77	2,96
CCSTXX0T	3/4"	26,7 x 2,87	3,07
CCSTXX01	1"	33,4 x 3,38	3,17
CCSTXX1C	1 1/4"	42,2 x 3,56	3,24
CCSTXX1M	1 1/2"	48,3 x 3,68	3,26
CCSTXX02	2"	60,3 x 3,91	3,30
CCSTXX2M	2 1/2"	73,0 x 5,16	4,84
CCSTXX03	3"	88,9 x 5,49	5,59
CCSTXX04	4"	114,3 x 6,02	7,81
CCSTXX05	5"	141,3 x 6,55	9,78
CCSTXX06	6"	168,3 x 7,11	15,84
CCSTXX08	8"	219,1 x 8,18	27,78
CCSTXX10	10"	273,0 x 9,27	46,14
CCSTXX12	12"	323,8 x 9,53	66,53
CCSTXX14	14"	355,6 x 9,53	98,00
CCSTXX16	16"	406,4 x 9,53	117,84
CCSTXX18	18"	457,0 x 9,53	148,12
CCSTXX20	20"	508,0 x 9,53	217,01

## TES

ASTM A-234 WPB  
ASME B 16.9 STD

Referencia	Pulgadas	Dimensiones Diám. ext. x Espesor	€
CTXXXX21	1/2"	21,3 x 2,77	7,93
CTXXXX27	3/4"	26,7 x 2,87	7,93
CTXXXX33	1"	33,4 x 3,38	8,50
CTXXXX42	1 1/4"	42,2 x 3,56	9,19
CTXXXX48	1 1/2"	48,3 x 3,68	10,71
CTXXXX60	2"	60,3 x 3,91	14,53
CTXXXX76	2 1/2"	73,0 x 5,16	20,44
CTXXXX89	3"	88,9 x 5,49	28,13
CTXXX114	4"	114,3 x 6,02	40,26
CTXXX140	5"	141,3 x 6,55	62,70
CTXXX168	6"	168,3 x 7,11	83,87
CTXXX219	8"	219,1 x 8,18	158,86
CTXXX273	10"	273,0 x 9,27	299,79
CTXXX324	12"	323,8 x 9,53	384,81
CTXXX355	14"	355,6 x 9,53	506,09
CTXXX406	16"	406,4 x 9,53	790,82
CTXXX457	18"	457,0 x 9,53	1088,78
CTXXX508	20"	508,0 x 9,53	1335,78



# DAR "ASTM A-234"



## REDUCCIONES CONCENTRICAS Y EXCENTRICAS ASTM A-234 WPB ASME B 16.9 STD

Pulgadas	Diámetro Exterior		Reducciones Concéntricas		Reducciones Excéntricas	
	Gr. (d1xs1)	Peq. (d2xs2)	Referencia	€	Referencia	€
3/4" x 1/2"	26,7 x 2,87	21,3 x 2,77	CRST0T0M	2,37	CREX0T0M	2,49
1" x 1/2"	33,4 x 3,38	21,3 x 2,77	CRST010M	2,37	CREX010M	3,12
1" x 3/4"	33,4 x 3,38	26,7 x 2,87	CRST010T	2,10	CREX010T	2,73
1 1/4" x 1/2"	42,2 x 3,56	21,3 x 2,77	CRST1C0M	2,85	CREX1C0M	4,62
1 1/4" x 3/4"	42,2 x 3,56	26,7 x 2,87	CRST1C0T	2,49	CREX1C0T	4,06
1 1/4" x 1"	42,2 x 3,56	33,4 x 3,38	CRST1C01	2,42	CREX1C01	3,12
1 1/2" x 1/2"	48,3 x 3,68	21,3 x 2,77	CRST1M0M	4,13	CREX1M0M	5,14
1 1/2" x 3/4"	48,3 x 3,68	26,7 x 2,87	CRST1M0T	3,35	CREX1M0T	4,17
1 1/2" x 1"	48,3 x 3,68	33,4 x 3,38	CRST1M01	2,65	CREX1M01	3,21
1 1/2" x 1 1/4"	48,3 x 3,68	42,2 x 3,56	CRST1M1C	2,48	CREX1M1C	3,21
2" x 3/4"	60,3 x 3,91	26,7 x 2,87	CRST020T	3,52	CREX020T	7,42
2" x 1"	60,3 x 3,91	33,4 x 3,38	CRST0201	3,43	CREX0201	5,08
2" x 1 1/4"	60,3 x 3,91	42,2 x 3,56	CRST021C	3,26	CREX021C	3,82
2" x 1 1/2"	60,3 x 3,91	48,3 x 3,68	CRST021M	3,18	CREX021M	3,65
2 1/2" x 1"	73,0 x 5,16	33,4 x 3,38	CRST2M01	7,94	CREX2M01	10,11
2 1/2" x 1 1/4"	73,0 x 5,16	42,2 x 3,56	CRST2M1C	4,78	CREX2M1C	8,26
2 1/2" x 1 1/2"	73,0 x 5,16	48,3 x 3,68	CRST2M1M	4,70	CREX2M1M	6,34
2 1/2" x 2"	73,0 x 5,16	60,3 x 3,91	CRST2M02	4,26	CREX2M02	5,92
3" x 1 1/4"	88,9 x 5,49	42,2 x 3,56	CRST031C	6,15	CREX031C	13,64
3" x 1 1/2"	88,9 x 5,49	48,3 x 3,68	CRST031M	5,54	CREX031M	12,35
3" x 2"	88,9 x 5,49	60,3 x 3,91	CRST0302	5,23	CREX0302	8,29
3" x 2 1/2"	88,9 x 5,49	73,0 x 5,16	CRST032M	5,14	CREX032M	7,47
4" x 1 1/2"	114,3 x 6,02	48,3 x 3,68	CRST041M	11,67	CREX041M	16,87
4" x 2"	114,3 x 6,02	60,3 x 3,91	CRST0402	10,28	CREX0402	11,39
4" x 2 1/2"	114,3 x 6,02	73,0 x 5,16	CRST042M	9,09	CREX042M	10,16
4" x 3"	114,3 x 6,02	88,9 x 5,49	CRST0403	7,83	CREX0403	9,43
5" x 2"	141,3 x 6,55	60,3 x 3,91	CRST0502	21,47	CREX0502	28,13
5" x 2 1/2"	141,3 x 6,55	73,0 x 5,16	CRST052M	15,84	CREX052M	24,32
5" x 3"	141,3 x 6,55	88,9 x 5,49	CRST0503	14,68	CREX0503	19,90
5" x 4"	141,3 x 6,55	114,3 x 6,02	CRST0504	13,58	CREX0504	19,50
6" x 2 1/2"	168,3 x 7,11	73,0 x 5,16	CRST062M	22,32	CREX062M	36,79
6" x 3"	168,3 x 7,11	88,9 x 5,49	CRST0603	20,71	CREX0603	31,74
6" x 4"	168,3 x 7,11	114,3 x 6,02	CRST0604	19,68	CREX0604	22,61
6" x 5"	168,3 x 7,11	141,3 x 6,55	CRST0605	19,35	CREX0605	21,20
8" x 4"	219,1 x 8,18	114,3 x 6,02	CRST0804	36,94	CREX0804	51,06
8" x 5"	219,1 x 8,18	141,3 x 6,55	CRST0805	33,21	CREX0805	37,99
8" x 6"	219,1 x 8,18	168,3 x 7,11	CRST0806	32,63	CREX0806	36,07
10" x 4"	273,0 x 9,27	114,3 x 6,02	CRST1004	63,49	CREX1004	95,16
10" x 5"	273,0 x 9,27	141,3 x 6,55	CRST1005	60,50	CREX1005	81,48
10" x 6"	273,0 x 9,27	168,3 x 7,11	CRST1006	55,01	CREX1006	72,82
10" x 8"	273,0 x 9,27	219,1 x 8,18	CRST1008	52,07	CREX1008	65,72
12" x 6"	323,8 x 9,53	168,3 x 7,11	CRST1206	99,90	CREX1206	129,84
12" x 8"	323,8 x 9,53	219,1 x 8,18	CRST1208	79,35	CREX1208	108,43
12" x 10"	323,8 x 9,53	273,0 x 9,27	CRST1210	77,30	CREX1210	93,33
14" x 8"	355,6 x 9,53	219,1 x 8,18	CRST1408	214,11	CREX1408	266,95
14" x 10"	355,6 x 9,53	273,0 x 9,27	CRST1410	192,15	CREX1410	222,41
14" x 12"	355,6 x 9,53	323,8 x 9,53	CRST1412	186,66	CREX1412	200,77
16" x 8"	406,4 x 9,53	219,1 x 8,18	CRST1608	329,35	CREX1608	419,89
16" x 10"	406,4 x 9,53	273,0 x 9,27	CRST1610	305,99	CREX1610	382,67
16" x 12"	406,4 x 9,53	323,8 x 9,53	CRST1612	291,44	CREX1612	343,52
16" x 14"	406,4 x 9,53	355,6 x 9,53	CRST1614	280,67	CREX1614	311,35

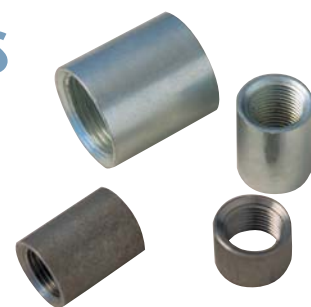
# MANGUITOS Y BOBINAS DE ACERO

## MANGUITOS Y MEDIOS MANGUITOS

ROSCA CILÍNDRICA ISO 7/1 (EN 10226-1)

DIN 2986

ACERO ST 37,2



### MANGUITOS

Dimensiones		Negros		Zincados	
Pulgadas	Longitud mm.	Referencia	€	Referencia	€
1/8"	17	M1100000	<b>0,314</b>	M5100000	<b>0,388</b>
1/4"	25	M1100001	<b>0,314</b>	M5100001	<b>0,388</b>
3/8"	26	M1100002	<b>0,336</b>	M5100002	<b>0,428</b>
1/2"	34	M1100003	<b>0,403</b>	M5100003	<b>0,507</b>
3/4"	36	M1100004	<b>0,538</b>	M5100004	<b>0,659</b>
	45			M5100445	<b>0,750</b>
1"	43	M1100005	<b>0,690</b>	M5100005	<b>0,893</b>
1" 1/4	48	M1100006	<b>1,055</b>	M5100006	<b>1,364</b>
1" 1/2	48	M1100007	<b>1,349</b>	M5100007	<b>1,701</b>
2"	56	M1100008	<b>1,915</b>	M5100008	<b>2,464</b>
2" 1/2	65	M110000A	<b>3,399</b>	M510000A	<b>4,361</b>
3"	71	M110000B	<b>4,465</b>	M510000B	<b>5,786</b>
4"	83	M110000D	<b>8,400</b>	M510000D	<b>10,545</b>
5"	92	M110000F	<b>12,274</b>	M510000F	<b>16,739</b>
6"	92	M110000G	<b>25,126</b>	M510000G	<b>31,246</b>

### MEDIOS MANGUITOS

Dimensiones		Negros	
Pulgadas	Longitud mm.	Referencia	€
1/4"	11	M1400001	<b>0,279</b>
3/8"	12	M1400002	<b>0,300</b>
1/2"	15	M1400003	<b>0,353</b>
3/4"	17	M1400004	<b>0,494</b>
1"	19,5	M1400005	<b>0,678</b>
1" 1/4	22	M1400006	<b>0,952</b>
1" 1/2	22	M1400007	<b>1,174</b>
2"	26	M1400008	<b>1,691</b>
2" 1/2	30,5	M140000A	<b>2,869</b>
3"	34	M140000B	<b>3,458</b>
4"	40	M140000D	<b>6,437</b>

## BOBINAS DE PROLONGACIÓN

ROSCA CÓNICA ISO 7/1 (EN 10226-1)

DIN 2981 GALVANIZADOS

ACERO ST 37,2



Longitud mm.	G Ref.	Pulgadas							
		3/8"	1/2"	3/4"	1"	1" 1/4	1" 1/2	2"	
100	G Ref. B5322100	<b>1,093</b> B5322100	<b>1,200</b> B5323100						
120	G Ref.			<b>1,409</b> B5324120					
140	G Ref.				<b>1,451</b> B5325140				
150	G Ref.					<b>2,785</b> B5326150	<b>3,385</b> B5327150		
170	G Ref.								<b>4,338</b> B5328170

## BOBINAS ROSCADAS POR UN EXTREMO

ROSCA CÓNICA ISO 7/1 (EN 10226-1)

DIN 2981 NEGRAS

ACERO ST 37,2

Longitud mm.	N Ref.	Pulgadas									
		3/8"	1/2"	3/4"	1"	1" 1/4	1" 1/2	2"	2" 1/2	3"	4"
100	N Ref. B6002100	<b>0,638</b> B6002100	<b>0,584</b> B6003100	<b>0,705</b> B6004100	<b>0,991</b> B6005100	<b>1,255</b> B6006100	<b>1,455</b> B6007100	<b>1,768</b> B6008100	<b>3,113</b> B600A100	<b>3,582</b> B600B100	<b>5,932</b> B600C100
150	N Ref. B6002150	<b>0,823</b> B6002150	<b>0,797</b> B6003150	<b>0,903</b> B6004150	<b>1,280</b> B6005150	<b>1,637</b> B6006150	<b>1,945</b> B6007150	<b>2,356</b> B6008150	<b>3,697</b> B600A150	<b>4,474</b> B600B150	<b>7,653</b> B600C150
200	N Ref. B6002200	<b>0,972</b> B6002200	<b>0,952</b> B6003200	<b>1,488</b> B6004200	<b>1,622</b> B6005200	<b>1,943</b> B6006200	<b>2,312</b> B6007200	<b>3,112</b> B6008200	<b>4,408</b> B600A200	<b>5,454</b> B600B200	<b>8,929</b> B600C200
250	N Ref. B6002250	<b>1,325</b> B6002250			<b>2,061</b> B6005250						



# BOBINAS ROSCADAS AMBOS EXTREMOS

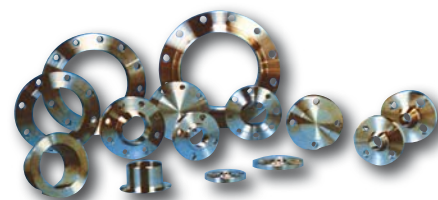
## ROSCA CÓNICA ISO 7/1 (EN 10226-1)

DIN 2982

ACERO ST 37,2

Pulgadas											
Longitud mm.		3/8"	1/2"	3/4"	1"	1" 1/4	1" 1/2	2"	2" 1/2	3"	4"
40	N	<b>0,539</b>	<b>0,520</b>	<b>0,587</b>	<b>0,779</b>	<b>1,100</b>	<b>1,360</b>				
	Ref. B1100240	B1100340	B1100440	B1100540	B110640	B1100740					
50	G	<b>0,615</b>	<b>0,596</b>	<b>0,691</b>	<b>0,889</b>	<b>1,189</b>	<b>1,404</b>	<b>1,840</b>			
	Ref. B5100240	B5100340	B5100440	B5100540	B5100640	B5100740	B5100840				
60	N	<b>0,569</b>	<b>0,540</b>	<b>0,592</b>	<b>0,792</b>	<b>1,031</b>	<b>1,390</b>				
	Ref. B1100250	B1100350	B1100450	B1100550	B1100650	B1100750					
70	G	<b>0,644</b>	<b>0,621</b>	<b>0,701</b>	<b>0,909</b>	<b>1,209</b>	<b>1,452</b>	<b>2,100</b>			
	Ref. B5100250	B5100350	B5100450	B5100550	B5100650	B5100750	B5100850				
80	N	<b>0,591</b>	<b>0,583</b>	<b>0,638</b>	<b>0,900</b>	<b>1,216</b>	<b>1,400</b>	<b>1,850</b>			
	Ref. B1100260	B1100360	B1100460	B1100560	B1100660	B1100760	B1100860				
90	G	<b>0,668</b>	<b>0,643</b>	<b>0,734</b>	<b>0,966</b>	<b>1,276</b>	<b>1,494</b>	<b>2,125</b>			
	Ref. B5100260	B5100360	B5100460	B5100560	B5100660	B5100760	B5100860				
100	N	<b>0,626</b>	<b>0,621</b>			<b>1,196</b>					
	Ref. B1100270	B1100370				B1100670					
110	G	<b>0,731</b>	<b>0,718</b>	<b>0,791</b>	<b>1,136</b>	<b>1,380</b>	<b>1,656</b>	<b>2,140</b>			
	Ref. B5100270	B5100370	B5100470	B5100570	B5100670	B5100770	B5100870				
120	N	<b>0,650</b>	<b>0,650</b>	<b>0,695</b>	<b>0,940</b>	<b>1,250</b>	<b>1,500</b>	<b>1,832</b>	<b>3,542</b>	<b>4,100</b>	<b>7,166</b>
	Ref. B1100280	B1100380	B1100480	B1100580	B1100680	B1100780	B1100880	B1100A80	B1100B80	B1100C80	
130	G	<b>0,734</b>	<b>0,760</b>	<b>0,793</b>	<b>1,139</b>	<b>1,390</b>	<b>1,664</b>	<b>2,068</b>	<b>3,747</b>	<b>4,700</b>	<b>7,450</b>
	Ref. B5100280	B5100380	B5100480	B5100580	B5100680	B5100780	B5100880	B5100A80	B5100B80	B5100C80	
140	N	<b>0,676</b>									
	Ref. B1100290										
150	G	<b>0,793</b>	<b>0,830</b>	<b>0,925</b>	<b>1,247</b>	<b>1,532</b>	<b>1,812</b>	<b>2,550</b>	<b>3,988</b>		
	Ref. B5100290	B5100390	B5100490	B5100590	B5100690	B5100790	B5100890	B5100A90			
160	N	<b>0,790</b>	<b>0,654</b>	<b>0,760</b>	<b>1,012</b>	<b>1,327</b>	<b>1,600</b>	<b>2,007</b>	<b>3,722</b>	<b>4,481</b>	<b>7,742</b>
	Ref. B1102100	B1103100	B1104100	B1105100	B1106100	B1107100	B1108100	B110A100	B110B100	B110C100	
170	G	<b>0,813</b>	<b>0,758</b>	<b>0,980</b>	<b>1,283</b>	<b>1,472</b>	<b>1,840</b>	<b>2,600</b>	<b>4,100</b>	<b>4,845</b>	<b>8,195</b>
	Ref. B5102100	B5103100	B5104100	B5105100	B5106100	B5107100	B5108100	B510A100	B510B100	B510C100	
180	N				<b>1,132</b>						
	Ref. B1105110										
190	G	<b>0,800</b>	<b>0,739</b>	<b>0,798</b>	<b>1,132</b>	<b>1,472</b>	<b>1,846</b>	<b>2,216</b>	<b>4,186</b>	<b>4,997</b>	<b>8,781</b>
	Ref. B1102120	B1103120	B1104120	B1105120	B1106120	B1107120	B1108120	B110A120	B110B120	B110C120	
200	N	<b>0,933</b>	<b>0,884</b>	<b>1,029</b>	<b>1,492</b>	<b>1,711</b>	<b>2,142</b>	<b>2,795</b>	<b>4,568</b>	<b>5,400</b>	<b>9,170</b>
	Ref. B5102120	B5103120	B5104120	B5105120	B5106120	B5107120	B5108120	B510A120	B510B120	B510C120	
210	G	<b>0,820</b>	<b>0,770</b>	<b>0,890</b>	<b>1,237</b>	<b>1,571</b>	<b>1,992</b>	<b>2,409</b>	<b>4,241</b>	<b>5,072</b>	<b>8,864</b>
	Ref. B1102140	B1103140	B1104140	B1105140	B1106140	B1107140	B1108140	B110A140	B110B140	B110C140	
220	N	<b>1,060</b>	<b>0,917</b>	<b>1,086</b>	<b>1,615</b>	<b>1,936</b>	<b>2,342</b>	<b>2,984</b>	<b>4,736</b>	<b>5,551</b>	<b>9,262</b>
	Ref. B5102140	B5103140	B5104140	B5105140	B5106140	B5107140	B5108140	B510A140	B510B140	B510C140	
230	G	<b>0,854</b>	<b>0,792</b>	<b>0,961</b>	<b>1,320</b>	<b>1,610</b>	<b>2,075</b>	<b>2,551</b>	<b>4,334</b>	<b>5,294</b>	<b>9,114</b>
	Ref. B1102150	B1103150	B1104150	B1105150	B1106150	B1107150	B1108150	B110A150	B110B150	B110C150	
240	N	<b>1,075</b>	<b>0,979</b>	<b>1,148</b>	<b>1,664</b>	<b>2,008</b>	<b>2,344</b>	<b>3,012</b>	<b>4,845</b>	<b>5,962</b>	<b>9,680</b>
	Ref. B5102150	B5103150	B5104150	B5105150	B5106150	B5107150	B5108150	B510A150	B510B150	B510C150	
250	G	<b>0,910</b>	<b>0,910</b>	<b>1,072</b>	<b>1,410</b>	<b>1,839</b>	<b>2,246</b>	<b>2,833</b>	<b>4,436</b>	<b>5,870</b>	<b>9,394</b>
	Ref. B1103160	B1104160	B1105160	B1106160	B1107160	B1108160	B110A160	B110B160	B110C160		
260	N	<b>1,087</b>	<b>1,080</b>	<b>1,178</b>	<b>1,717</b>	<b>2,083</b>	<b>2,462</b>	<b>3,124</b>	<b>5,002</b>	<b>6,251</b>	<b>9,706</b>
	Ref. B5102160	B5103160	B5104160	B5105160	B5106160	B5107160	B5108160	B510A160	B510B160	B510C160	
270	G		<b>0,925</b>	<b>1,102</b>	<b>1,472</b>	<b>1,975</b>	<b>2,550</b>	<b>2,845</b>	<b>4,850</b>	<b>5,820</b>	<b>9,811</b>
	Ref. B1103180	B1104180	B1105180	B1106180	B1107180	B1108180	B110A180	B110B180	B110C180		
280	N	<b>1,183</b>	<b>1,177</b>	<b>1,311</b>	<b>1,891</b>	<b>2,318</b>	<b>2,760</b>	<b>3,524</b>	<b>5,057</b>	<b>6,549</b>	<b>10,502</b>
	Ref. B5102180	B5103180	B5104180	B5105180	B5106180	B5107180	B5108180	B510A180	B510B180	B510C180	
290	G	<b>0,999</b>	<b>1,007</b>	<b>1,132</b>	<b>1,644</b>	<b>2,109</b>	<b>2,700</b>	<b>3,209</b>	<b>5,002</b>	<b>6,141</b>	<b>10,385</b>
	Ref. B1102200	B1103200	B1104200	B1105200	B1106200	B1107200	B1108200	B110A200	B110B200	B110C200	
300	N	<b>1,216</b>	<b>1,205</b>	<b>1,492</b>	<b>2,061</b>	<b>2,544</b>	<b>2,873</b>	<b>3,908</b>	<b>5,773</b>	<b>7,221</b>	<b>11,517</b>
	Ref. B5102200	B5103200	B5104200	B5105200	B5106200	B5107200	B5108200	B510A200	B510B200	B510C200	
310	G	<b>1,438</b>	<b>1,510</b>	<b>1,604</b>	<b>2,170</b>	<b>3,050</b>	<b>3,398</b>	<b>4,156</b>	<b>5,900</b>	<b>7,180</b>	<b>12,300</b>
	Ref. B1102250	B1103250	B1104250	B1105250	B1106250	B1107250	B1108250	B110A250	B110B250	B110C250	
320	N	<b>1,807</b>	<b>1,653</b>	<b>1,882</b>	<b>2,730</b>	<b>3,265</b>	<b>3,934</b>	<b>4,845</b>	<b>6,702</b>	<b>8,113</b>	<b>13,209</b>
	Ref. B5102250	B5103250	B5104250	B5105250	B5106250	B5107250	B5108250	B510A250	B510B250	B510C250	
330	G	<b>1,644</b>	<b>1,512</b>	<b>1,793</b>	<b>2,452</b>	<b>3,211</b>	<b>3,871</b>	<b>4,718</b>	<b>6,422</b>	<b>8,077</b>	<b>13,774</b>
	Ref. B1102300	B1103300	B1104300	B1105300	B1106300	B1107300	B1108300	B110A300	B110B300	B110C300	
340	N	<b>2,017</b>	<b>1,872</b>	<b>2,267</b>	<b>3,209</b>	<b>3,679</b>	<b>4,334</b>	<b>5,849</b>	<b>7,362</b>	<b>11,000</b>	<b>14,918</b>
	Ref. B5102300	B5103300	B5104300	B5105300	B5106300	B5107300	B5108300	B510A300	B510B300	B510C300	
350	G	<b>2,022</b>	<b>1,850</b>	<b>2,258</b>	<b>3,063</b>	<b>4,004</b>	<b>4,894</b>	<b>5,954</b>			
	Ref. B1102400	B1103400	B1104400	B1105400	B1106400	B1107400	B1108400				
360	N	<b>2,431</b>	<b>2,312</b>	<b>2,857</b>	<b>4,004</b>	<b>4,589</b>	<b>5,415</b>	<b>7,295</b>	<b>9,310</b>	<b>20,884</b>	<b>31,740</b>
	Ref. B5102400	B5103400	B5104400	B5105400	B5106400	B5107400	B5108400	B510A400	B510B400	B510C400	
370	G	<b>2,408</b>	<b>2,293</b>	<b>2,711</b>	<b>3,732</b>	<b>4,859</b>	<b>5,984</b>	<b>7,286</b>			
	Ref. B1102500	B1103500	B1104500	B1105500	B1106500	B1107500	B1108500				
380	N	<b>2,955</b>	<b>2,814</b>	<b>3,472</b>	<b>4,859</b>	<b>5,568</b>	<b>6,579</b>		<b>10,971</b>	<b>26,404</b>	<b>36,800</b>
	Ref. B5102500	B5103500	B5104500	B5105500	B5106500	B5107500	B5108500	B510A500	B510B500	B510C500	
390	G										
	Ref. B5131000	B5141000	B5151000	B5161000	B5171000	B5181000					

# BRIDAS FORJADAS



Medidas			BRIDA PLANA DIN 2576-2502 PN 10/16			BRIDA PLANA DIN 2503 PN 25/40			BRIDA CIEGA DIN 2527 PN 10/16			BRIDA CUELLO DIN 2633 PN 16		
DN	Pulg.	mm.	Ref.	Peso aprox.	€	Ref.	Peso aprox.	€	Ref.	Peso aprox.	€	Ref.	Peso aprox.	€
15	1/2"	21,3	F2576015	0,67	<b>4,62</b>	F2503015	0,77	<b>5,88</b>	F2527015	0,72	<b>4,58</b>	F2633015	0,65	<b>4,32</b>
20	3/4"	26,9	F2576020	0,94	<b>4,87</b>	F2503020	1,00	<b>7,06</b>	F2527020	1,01	<b>6,05</b>	F2633020	0,95	<b>4,91</b>
25	1"	33,7	F2576025	1,11	<b>4,89</b>	F2503025	1,28	<b>8,80</b>	F2527025	1,23	<b>5,40</b>	F2633025	1,14	<b>5,61</b>
32	1 1/4"	42,4	F2576032	1,62	<b>6,39</b>	F2503032	1,87	<b>8,98</b>	F2527032	1,80	<b>7,34</b>	F2633032	1,69	<b>8,86</b>
40	1 1/2"	48,3	F2576040	1,86	<b>7,11</b>	F2503040	2,13	<b>10,75</b>	F2527040	2,09	<b>8,19</b>	F2633040	1,86	<b>9,62</b>
50	2"	60,3	F2576050	2,47	<b>9,01</b>	F2503050	2,79	<b>11,00</b>	F2527050	2,88	<b>10,74</b>	F2633050	2,53	<b>11,84</b>
65	2 1/2"	76,2	F2576065	3,00	<b>10,40</b>	F2503065	3,48	<b>14,00</b>	F2527065	3,66	<b>11,88</b>	F2633065	3,06	<b>12,34</b>
80	3"	88,9	F2576080*	3,79	<b>12,43</b>	F2503080	4,35	<b>15,62</b>	F2527080	4,77	<b>15,78</b>	F2633080	3,70	<b>15,19</b>
			F2502080	3,79	<b>13,42</b>									
100	3 1/2"	108	F2576090	4,20	<b>15,00</b>									
100	4"	114,3	F2576100	4,03	<b>15,00</b>	F2503100	5,78	<b>23,48</b>	F2527100	5,65	<b>18,13</b>	F2633100	4,62	<b>24,00</b>
125	5"	139,7	F2576125	5,46	<b>19,18</b>	F2503125	7,87	<b>22,83</b>	F2527125	8,42	<b>27,17</b>	F2633125	6,30	<b>33,00</b>
150	6"	168,3	F2576150	6,57	<b>21,95</b>	F2503150	10,10	<b>32,58</b>	F2527150	10,40	<b>34,73</b>	F2633150	7,75	<b>32,40</b>
175	7"	193,7	F2576175	8,45	<b>28,50</b>									
200	8"	219,1	F2576200*	9,31	<b>31,22</b>	F2503200	13,60	<b>49,10</b>	F5271200*	16,50	<b>56,29</b>	F2633200	11,00	<b>56,38</b>
			F2502200	9,31	<b>33,00</b>	F5034200*	17,40	<b>60,00</b>	F2527200	16,10	<b>57,86</b>			
250	10"	273	F2576250*	11,90	<b>45,00</b>	F2503250	19,40	<b>108,46</b>	F5271250*	24,00	<b>80,00</b>	F2633250	15,60	<b>80,22</b>
			F2502250	13,40	<b>46,40</b>	F5034250*	27,60	<b>129,12</b>	F2527250	24,90	<b>85,19</b>			
300	12"	323,9	F2576300*	13,80	<b>52,94</b>	F2503300	25,00	<b>132,35</b>	F5271300*	30,90	<b>114,68</b>	F2633300	22,00	<b>105,21</b>
			F2502300	17,40	<b>55,42</b>	F5034300*	37,80	<b>176,47</b>	F2527300	35,10	<b>126,05</b>			
350	14"	355,6	F2576350*	20,60	<b>70,00</b>	F2503350	38,20	<b>220,59</b>	F5271350*	40,60	<b>169,68</b>	F2633350	31,20	<b>164,09</b>
			F2502350	28,60	<b>86,47</b>	F5034350*	63,40	<b>308,82</b>	F2527350	47,80	<b>203,62</b>			
400	16"	406,4	F2576400*	27,90	<b>101,09</b>	F2503400	48,80	<b>264,71</b>	F5271400*	49,40	<b>184,17</b>	F2633400	39,30	<b>206,44</b>
			F2502400	30,90	<b>119,09</b>	F5034400*	75,40	<b>397,06</b>	F2527400	63,50	<b>249,72</b>			
450	18"	457	F2576450*	35,60	<b>124,40</b>				F5271450*	71,00	<b>280,00</b>			
			F2502450	46,00	<b>181,00</b>				F2527450	91,00	<b>335,00</b>			
500	20"	508	F2576500*	41,10	<b>152,13</b>	F2503500	67,20	<b>375,00</b>	F5271500*	75,00	<b>276,68</b>	F2633500	61,00	<b>303,92</b>
			F2502500	54,00	<b>214,72</b>	F5034500*	88,30	<b>441,18</b>	F2527500	102,00	<b>366,26</b>			
600	24"	610	F2576600*	46,68	<b>155,95</b>				F5271600*	98,28	<b>333,12</b>	F2633600	75,40	<b>462,86</b>
			F2502600	70,19	<b>232,00</b>				F2527600	146,66	<b>486,95</b>			
700	28"	711	F2576700*	59,21	<b>200,51</b>				F5271700*	139,35	<b>462,55</b>	F2633700	77,00	<b>463,75</b>
			F2502700	70,12	<b>238,70</b>				F2527700	176,89	<b>589,86</b>			
800	32"	813	F2576800*	82,61	<b>274,77</b>				F5271800*	204,28	<b>676,85</b>	F2633800	101,00	<b>644,79</b>
			F2502800	95,72	<b>318,27</b>				F2527800	250,08	<b>828,56</b>			
900	36"	914	F2576900*	99,38	<b>362,83</b>				F5271900*	269,17	<b>969,66</b>	F2633900	122,00	<b>778,84</b>
			F2502900	113,78	<b>410,57</b>				F2527900	331,76	<b>1128,80</b>			
1000	40"	1.016,00	F2576999*	122,55	<b>443,46</b>				F5271999*	382,34	<b>1375,99</b>	F2633999	162,00	<b>1034,22</b>
			F2502999	160,19	<b>572,89</b>				F2527999	442,05	<b>1591,35</b>			

\*PN 10

\*PN 40

\*PN 10



Medidas			BRIDA CUELLO DIN 2631 PN/6 - 2632 PN/10			BRIDA CUELLO DIN 2634 PN/25 - 2635 PN/40			BRIDA PLANA DIN 2573 PN 6			BRIDA PLANA REGADÍO DIN 2576 PN 10/16		
DN	Pulg.	mm.	Ref.	Peso aprox.	€	Ref.	Peso aprox.	€	Ref.	Peso aprox.	€	Ref.	Peso aprox.	€
15	1/2"	21,3	F2631015	0,39	<b>3,06</b>	F2635015	0,75	<b>5,13</b>	F2573015	0,41	<b>3,79</b>			
20	3/4"	26,9	F2631020	0,59	<b>3,29</b>	F2635020	1,06	<b>5,94</b>	F2573020	0,60	<b>3,83</b>			
25	1"	33,7	F2631025	0,75	<b>3,81</b>	F2635025	1,29	<b>6,38</b>	F2573025	0,74	<b>3,95</b>			
32	1"1/4	42,4	F2631032	1,05	<b>5,23</b>	F2635032	1,88	<b>8,75</b>	F2573032	1,19	<b>5,26</b>			
40	1"1/2	48,3	F2631040	1,18	<b>5,95</b>	F2635040	2,33	<b>10,80</b>	F2573040	1,39	<b>5,55</b>	F576R040	1,38	<b>6,19</b>
50	2"	60,3	F2631050	1,34	<b>6,19</b>	F2635050	2,82	<b>14,75</b>	F2573050	1,53	<b>5,73</b>	F576R050	1,64	<b>6,66</b>
65	2"1/2	76,2	F2631065	1,67	<b>7,00</b>	F2635065	3,74	<b>15,53</b>	F2573065	1,89	<b>6,36</b>	F576R065	2,00	<b>7,28</b>
80	3"	88,9	F2631080	2,71	<b>10,69</b>	F2635080	4,75	<b>18,42</b>	F2573080	2,98	<b>10,30</b>	F576R080*	2,37	<b>9,92</b>
												F576R816	2,37	<b>10,09</b>
100	4"	114,3	F2631100	3,24	<b>15,00</b>	F2635100	6,52	<b>24,58</b>	F2573100	3,46	<b>11,97</b>	F576R100	2,41	<b>10,50</b>
125	5"	139,7	F2631125	4,49	<b>20,78</b>	F2635125	9,07	<b>40,64</b>	F2573125	4,60	<b>16,52</b>	F576R125	2,97	<b>10,91</b>
150	6"	168,3	F2631150	5,15	<b>23,94</b>	F2635150	11,80	<b>53,22</b>	F2573150	5,22	<b>23,00</b>	F576R150	4,18	<b>15,25</b>
200	8"	219,1	F2631200	7,78	<b>36,51</b>	F2634200*	17,00	<b>73,80</b>	F2573200	7,15	<b>25,82</b>	F576R200*	5,45	<b>21,30</b>
			F2632200*	11,30	<b>62,50</b>	F2635200	21,50	<b>97,20</b>				F576R216	5,45	<b>23,22</b>
250	10"	273	F2631250	10,80	<b>58,82</b>	F2634250*	24,40	<b>128,34</b>	F2573250	9,61	<b>38,50</b>	F576R250	6,40	<b>27,68</b>
			F2632250*	14,70	<b>72,88</b>	F2635250	34,90	<b>183,56</b>						
300	12"	323,9	F2631300	14,00	<b>84,92</b>	F2634300*	31,20	<b>169,39</b>	F2573300	12,60	<b>48,13</b>	F576R300	7,43	<b>29,41</b>
			F2632300*	17,40	<b>85,00</b>	F2635300	49,70	<b>269,51</b>						
350	14"	355,6	F2631350	18,50	<b>117,53</b>	F2634350*	47,20	<b>268,63</b>	F2573350	15,60	<b>61,09</b>			
			F2632350*	23,60	<b>118,72</b>	F2635350	68,10	<b>387,17</b>						
400	16"	406,4	F2631400	21,20	<b>134,70</b>	F2634400*	61,70	<b>349,67</b>	F2573400	18,40	<b>78,05</b>			
			F2632400*	28,60	<b>150,80</b>	F2635400	96,50	<b>548,63</b>						
500	20"	508	F2631500	28,60	<b>188,56</b>	F2634500*	89,60	<b>508,87</b>	F2573500	24,60	<b>101,81</b>			
			F2632500*	38,10	<b>208,57</b>	F2635500	117,00	<b>690,27</b>						

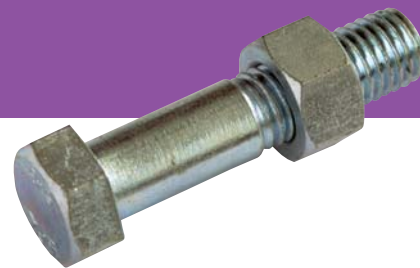
\* PN 10

\* PN 25

\*PN 10

Medidas			BRIDA PLANA ROSCADA DIN 2573 PN 6			BRIDA PLANA ROSCADA DIN 2576 PN 10/16			BRIDA CUELLO ROSCADA DIN 2566 PN 16			BRIDA CUELLO ROSCADA GALVA DIN 2566 PN 16		
DN	Pulg.	mm.	Ref.	Peso aprox.	€	Ref.	Peso aprox.	€	Ref.	Peso aprox.	€	Ref.	Peso aprox.	€
15	1/2"	21,3	F573O015	0,41	<b>4,60</b>	F576O015	0,67	<b>5,67</b>	F5660015	0,61	<b>6,00</b>	F566G015	0,61	<b>7,30</b>
20	3/4"	26,9	F573O020	0,60	<b>4,90</b>	F576O020	0,94	<b>5,80</b>	F5660020	0,91	<b>6,29</b>	F566G020	0,91	<b>7,60</b>
25	1"	33,7	F573O025	0,74	<b>5,00</b>	F576O025	1,11	<b>6,62</b>	F5660025	1,10	<b>6,91</b>	F566G025	1,10	<b>8,21</b>
32	1"1/4	42,4	F573O032	1,19	<b>6,00</b>	F576O032	1,62	<b>7,59</b>	F5660032	1,60	<b>7,26</b>	F566G032	1,60	<b>9,27</b>
40	1"1/2	48,3	F573O040	1,39	<b>6,53</b>	F576O040	1,86	<b>8,31</b>	F5660040	1,78	<b>9,00</b>	F566G040	1,78	<b>11,25</b>
50	2"	60,3	F573O050	1,53	<b>7,38</b>	F576O050	2,47	<b>9,94</b>	F5660050	2,43	<b>11,17</b>	F566G050	2,43	<b>14,11</b>
65	2"1/2	76,2	F573O065	1,89	<b>9,66</b>	F576O065	3,00	<b>11,99</b>	F5660065	3,18	<b>12,78</b>	F566G065	3,18	<b>16,78</b>
80	3"	88,9	F573O080	2,98	<b>10,84</b>	F576O080*	3,79	<b>14,92</b>	F5660080	4,12	<b>17,65</b>	F566G080	4,12	<b>23,20</b>
						F576O086	3,79	<b>15,84</b>						
100	4"	114,3	F573O100	3,46	<b>16,65</b>	F576O100	4,03	<b>17,11</b>	F5660100	4,47	<b>22,70</b>	F566G100	4,47	<b>24,74</b>
125	5"	139,7	F573O125	4,60	<b>22,71</b>	F576O125	5,46	<b>25,45</b>	F5660125	6,13	<b>32,29</b>	F566G125	6,13	<b>38,82</b>
150	6"	168,3	F573O150	5,22	<b>25,96</b>	F576O150	6,57	<b>27,15</b>	F5660150	7,92	<b>46,81</b>	F566G150	7,92	<b>55,96</b>

\* PN 10



## TORNILLO HEXAGONAL CON TUERCA TORNILLOS ZINCADOS 6.8 - DIN 931/934

MEDIDA	CÓDIGO	LONGITUD mm			PRECIO €/100 und.
M8	T9310860	60	100	600	<b>11,16</b>
M8	T9310816	160	70	420	<b>27,70</b>
M10	T9311050	50	125	750	<b>14,84</b>
M10	T9311055	55	100	600	<b>15,59</b>
M10	T9311060	60	100	600	<b>15,95</b>
M10	T9311070	70	100	600	<b>17,33</b>
M10	T9311080	80	80	480	<b>19,18</b>
M10	T9311090	90	75	450	<b>23,14</b>
M10	T9311010	100	75	450	<b>24,37</b>
M10	T9311012	120	40	240	<b>28,39</b>
M10	T9311014	140	40	240	<b>33,59</b>
M12	T9311240	40	100	600	<b>17,45</b>
M12	T9311250	50	100	600	<b>20,33</b>
M12	T9311255	55	85	510	<b>21,56</b>
M12	T9311260	60	80	480	<b>22,64</b>
M12	T9311270	70	50	300	<b>24,88</b>
M12	T9311280	80	50	300	<b>27,36</b>
M12	T9311290	90	50	300	<b>29,39</b>
M12	T9311210	100	50	300	<b>31,50</b>
M12	T9311211	110	50	300	<b>36,16</b>
M12	T9311212	120	40	240	<b>38,77</b>
M12	T9311214	140	25	150	<b>44,02</b>
M14	T9311450	50	70	420	<b>29,16</b>
M14	T9311455	55	70	420	<b>30,59</b>
M14	T9311460	60	60	360	<b>31,49</b>
M14	T9311470	70	50	300	<b>34,34</b>
M14	T9311480	80	50	300	<b>37,18</b>
M14	T9311490	90	50	300	<b>40,35</b>
M14	T9311410	100	25	150	<b>43,35</b>
M14	T9311412	120	25	150	<b>49,49</b>
M14	T9311413	130	25	150	<b>55,37</b>
M14	T9311414	140	25	150	<b>60,93</b>
M16	T9311650	50	40	240	<b>36,03</b>
M16	T9311655	55	40	240	<b>39,11</b>
M16	T9311660	60	40	240	<b>39,87</b>
M16	T9311665	65	40	240	<b>42,19</b>
M16	T9311670	70	35	210	<b>43,93</b>
M16	T9311675	75	30	180	<b>45,96</b>
M16	T9311680	80	30	180	<b>47,99</b>
M16	T9311690	90	25	150	<b>52,05</b>
M16	T9311610	100	25	150	<b>55,09</b>
M16	T9311611	110	20	120	<b>59,91</b>
M16	T9311612	120	20	120	<b>63,97</b>
M16	T9311613	130	20	120	<b>67,00</b>

MEDIDA	CÓDIGO	LONGITUD mm			PRECIO €/100 und.
M16	T9311614	140	20	120	<b>70,53</b>
M16	T9311615	150	20	120	<b>80,61</b>
M16	T9311616	160	20	120	<b>88,05</b>
M16	T9311618	180	15	90	<b>100,46</b>
M16	T9311620	200	15	90	<b>113,47</b>
M18	T9311860	60	35	210	<b>59,22</b>
M18	T9311870	70	35	180	<b>63,53</b>
M18	T9311880	80	25	150	<b>68,30</b>
M18	T9311890	90	25	150	<b>70,03</b>
M18	T9311810	100	25	150	<b>74,83</b>
M18	T9311811	110	20	120	<b>81,68</b>
M18	T9311812	120	20	120	<b>87,03</b>
M18	T9311813	130	20	120	<b>92,12</b>
M18	T9311814	140	20	120	<b>103,75</b>
M18	T9311815	150	15	90	<b>109,72</b>
M18	T9311816	160	15	90	<b>115,51</b>
M18	T9311818	180	10	60	<b>133,79</b>
M18	T9311820	200	10	60	<b>155,16</b>
M20	T9312070	70	20	120	<b>76,99</b>
M20	T9312080	80	15	90	<b>83,12</b>
M20	T9312090	90	15	90	<b>90,24</b>
M20	T9312010	100	15	90	<b>95,81</b>
M20	T9312011	110	15	90	<b>102,19</b>
M20	T9312012	120	10	60	<b>108,58</b>
M20	T9312013	130	10	60	<b>113,40</b>
M20	T9312014	140	10	60	<b>118,66</b>
M20	T9312015	150	10	60	<b>131,83</b>
M20	T9312016	160	10	60	<b>149,16</b>
M20	T9312018	180	10	60	<b>168,64</b>
M20	T9312020	200	10	60	<b>195,43</b>
M24	T9312410	100	10	60	<b>173,18</b>
M24	T9312411	110	10	60	<b>189,91</b>
M24	T9312412	120	10	60	<b>200,97</b>
M24	T9312413	130	6	36	<b>215,01</b>
M24	T9312414	140	6	36	<b>219,84</b>
M24	T9312415	150	6	36	<b>230,90</b>
M24	T9312416	160	6	36	<b>242,37</b>
M24	T9312418	180	6	36	<b>273,82</b>
M24	T9312420	200	6	36	<b>317,43</b>
M27	T9312712	120	6	36	<b>277,01</b>
M30	T9313013	130	5	30	<b>364,38</b>
M33	T9313314	140	4	24	<b>477,97</b>
M36	T9313615	150	3	18	<b>620,22</b>
M39	T9313916	160	2	12	<b>733,80</b>



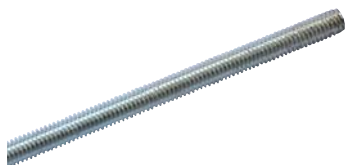
## TUERCAS HEXAGONALES CLASE 8 - ZINCADAS - DIN 934

MEDIDA	CÓDIGO			PRECIO €/100 und.
M4	T9340004	250	10000	<b>0,38</b>
M5	T9340005	250	10000	<b>0,42</b>
M6	T9340006	150	6000	<b>0,62</b>
M8	T9340008	125	4500	<b>1,31</b>
M10	T9340010	100	3600	<b>2,86</b>
M12	T9340012	70	2520	<b>4,26</b>
M14	T9340014	70	1260	<b>6,35</b>
M16	T9340016	70	1260	<b>8,31</b>
M18	T9340018	40	720	<b>13,09</b>
M20	T9340020	20	360	<b>16,06</b>
M22	T9340022	20	360	<b>22,64</b>
M24	T9340024	15	270	<b>29,84</b>
M27	T9340027	10	180	<b>47,78</b>
M30	T9340030	8	144	<b>65,03</b>
M33	T9340033	8	144	<b>93,07</b>
M36	T9340036	4	72	<b>121,63</b>
M39	T9340039	4	72	<b>165,10</b>



## ARANDELAS PLANAS ZINCADAS - DIN 125

MEDIDA	CÓDIGO			PRECIO €/100 und.
M4	T1250004	300	12000	<b>0,16</b>
M5	T1250005	300	12000	<b>0,21</b>
M6	T1250006	150	6000	<b>0,31</b>
M8	T1250008	125	5000	<b>0,54</b>
M10	T1250010	100	4000	<b>1,06</b>
M12	T1250012	100	4000	<b>1,76</b>
M14	T1250014	70	2800	<b>2,60</b>
M16	T1250016	70	2800	<b>2,93</b>
M18	T1250018	50	2000	<b>4,18</b>
M20	T1250020	50	2000	<b>4,64</b>
M22	T1250022	50	2000	<b>5,05</b>
M24	T1250024	50	900	<b>9,30</b>
M27	T1250027	50	900	<b>12,28</b>
M30	T1250030	50	900	<b>15,60</b>
M33	T1250033	30	540	<b>21,70</b>
M36	T1250036	25	450	<b>26,95</b>
M39	T1250039	10	180	<b>38,29</b>



## VARILLA ROSCADA 1.000 MM - 4.8 ZINCADAS - DIN 975

MEDIDA	CÓDIGO		PRECIO €/100 und.
M4	T9750004	100	<b>27,22</b>
M5	T9750005	100	<b>30,69</b>
M6	T9750006	50	<b>36,07</b>
M8	T9750008	25	<b>63,76</b>
M10	T9750010	25	<b>96,77</b>
M12	T9750012	20	<b>140,38</b>
M14	T9750014	15	<b>190,26</b>
M16	T9750016	10	<b>255,30</b>
M18	T9750018	5	<b>317,89</b>
M20	T9750020	5	<b>399,93</b>
M22	T9750022	5	<b>509,72</b>
M24	T9750024	5	<b>614,49</b>
M27	T9750027	4	<b>783,82</b>
M30	T9750030	2	<b>967,07</b>



## ARANDELAS ALA ANCHA ZINCADAS - DIN 9021

MEDIDA	CÓDIGO			PRECIO €/100 und.
M6	T9021006	100	4000	<b>1,14</b>
M8	T9021008	100	4000	<b>2,54</b>
M10	T9021010	50	2000	<b>4,98</b>
M12	T9021012	40	800	<b>10,58</b>
M14	T9021014	40	800	<b>15,08</b>
M16	T9021016	30	600	<b>17,40</b>
M18	T9021018	30	600	<b>32,14</b>
M20	T9021020	30	600	<b>35,31</b>

# JUNTAS PARA BRIDAS

## JUNTAS DE GOMA

- Según Norma DIN 2690. Válidas para bridas PN10 y PN16.
- Juntas de 3 mm. de espesor.
- Conservan sus propiedades entre -10 y 100° C.
- Las juntas del Tipo 1 se comercializan tanto en Goma como en NBR.



Diámetro Nominal		Tipo 1 N° taladros	Tipo 1 Goma		Tipo 1 NBR		Tipo 2 Goma	
DN	mm.	Ref.	€	Ref.	€	Ref.	€	
DN 25	4	JBG10025	0,32	JBG1N025	0,47	JBG20025	0,20	
DN 32	4	JBG10032	0,38	JBG1N032	0,56	JBG20032	0,23	
DN 40	4	JBG10040	0,45	JBG1N040	0,67	JBG20040	0,26	
DN 50	4	JBG10050	0,52	JBG1N050	0,80	JBG20050	0,34	
DN 65	4	JBG10065	0,62	JBG1N065	0,97	JBG20065	0,38	
DN 80	8	JBG10080	0,70	JBG1N080	1,10	JBG20080*	0,41	
DN 100	8	JBG10100	0,80	JBG1N100	1,19	JBG20100	0,51	
DN 125	8	JBG10125	0,98	JBG1N125	1,45	JBG20125	0,58	
DN 150	8	JBG10150	1,24	JBG1N150	1,79	JBG20150	0,68	
DN 175	8	JBG10175	1,56			JBG20175	0,83	
DN 200	8	JBG10200*	1,67	JBG1N200	2,88	JBG20200*	0,92	
DN 200	12	JBG10216	1,76					
DN 250	12	JBG10250*	2,16			JBG20250*	1,16	
DN 300	12	JBG10300*	2,63			JBG20300*	1,63	
DN 350	16	JBG10350*	3,96			JBG20350*	2,98	
DN 400	16	JBG10400*	4,69			JBG20400*	3,21	
DN 450	20	JBG10450*	6,00			JBG20450*	3,83	
DN 500	20	JBG10500*	8,89			JBG20500*	4,50	

\*PN 10

\*PN 10

## JUNTAS EN CARTÓN COMPRIMIDO

- Material empleado CSA-25. **Sin amianto.**  
Fabricado con fibras orgánicas y fibras minerales, mezcladas en una matriz de caucho.
- Juntas de 1,5 mm. de espesor.
- Temperatura máxima 180° C.
- Presión máxima 35 kgs/cm<sup>2</sup>.
- Aplicaciones: Agua, aire, diversos aceites y grasas, disolventes.
- Material diseñado para usos en aplicaciones moderadas.



### Juntas para brida sin taladros DIN 2690

Ref.	Diámetro	ø Ext.	ø Int.	€
JBKSA015	DN 15	50	20	0,16
JBKSA020	DN 20	60	25	0,18
JBKSA025	DN 25	70	30	0,22
JBKSA032	DN 32	82	40	0,24
JBKSA040	DN 40	92	50	0,31
JBKSA050	DN 50	107	60	0,36
JBKSA065	DN 65	127	77	0,49
JBKSA080	DN 80	142	90	0,55
JBKSA100	DN 100	162	114	0,71
JBKSA125	DN 125	192	140	0,88
JBKSA150	DN 150	218	168	1,20
JBKSA200	DN 200	273	220	1,68
JBKSA250	DN 250	328	273	2,40
JBKSA300	DN 300	378	325	3,35
JBKSA350	DN 350	438	368	4,73
JBKSA400	DN 400	490	420	5,90
JBKSA500	DN 500	595	520	9,08
JBKSA600	DN 600	680	620	18,44

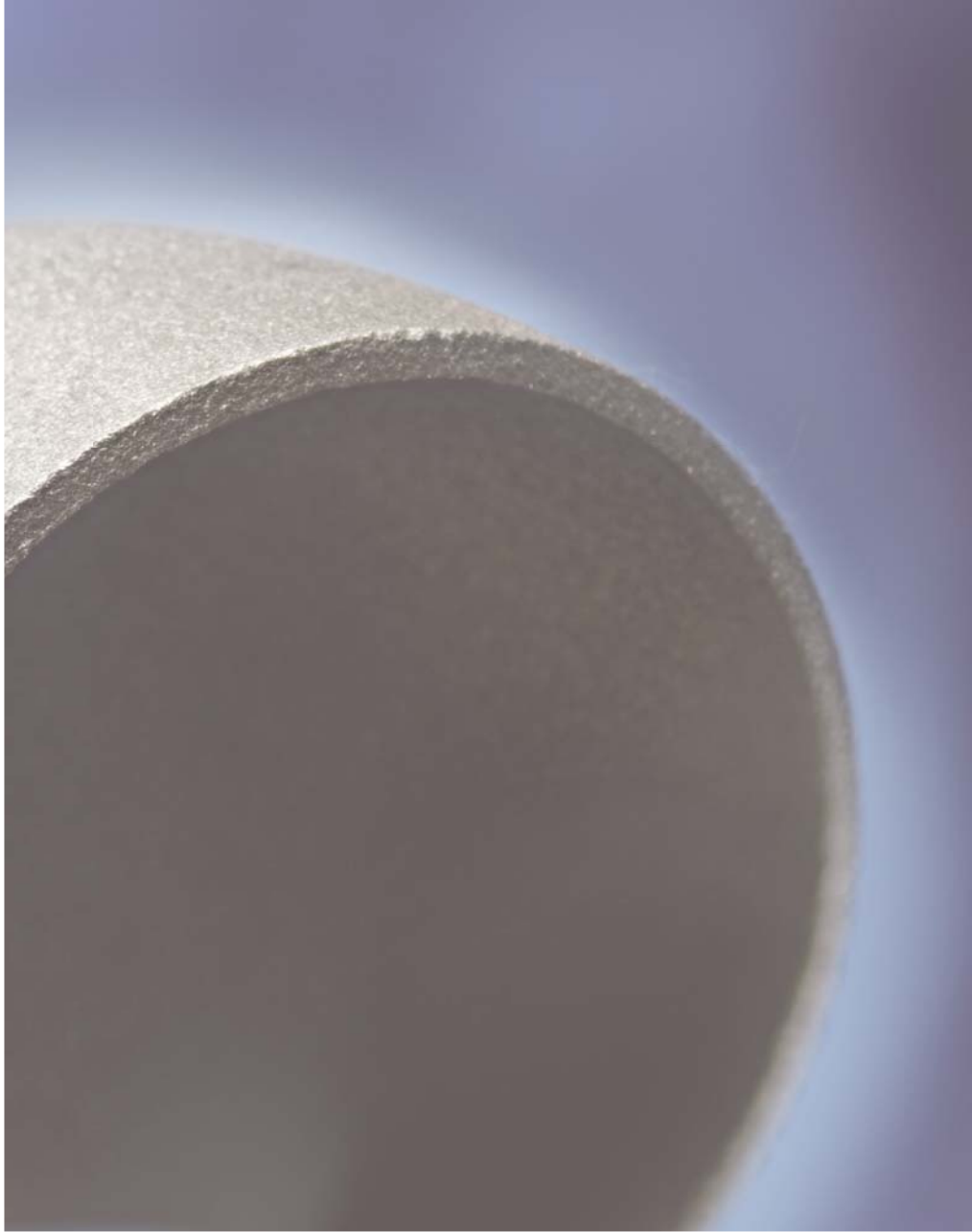
## JUNTAS SINTÉTICAS

- Capaz de soportar altas presiones y temperaturas: Desde -40° C hasta 120° C (DN > 200 → 60° C max.)
- Excelente resistencia a productos químicos, disolventes, aceites, grasas y gasolinas.
- Diseño exclusivo: Permite un centrado exacto en los diferentes tipos de bridas.



Ref.	Diámetro	Pulg.	€
JBP00040	DN 40	1 1/2"	1,74
JBP00050	DN 50	2"	1,80
JBP00065	DN 65	2 1/2"	1,92
JBP00080	DN 80	3"	2,20
JBP00100	DN 100	4"	2,31
JBP00125	DN 125	5"	2,55
JBP00150	DN 150	6"	2,80
JBP00200	DN 200	8"	4,24
JBP00250	DN 250	10"	10,23
JBP00300	DN 300	12"	16,09
JBP00400	DN 400	16"	25,71
JBP00500	DN 500	20"	46,09





Polígono Industrial ATUSA - Agurain  
**E 01200 SALVATIERRA** (Álava) ESPAÑA  
Tel.: +34 945 18 00 00 • Centralita  
Tel.: +34 945 18 00 01 • Pedidos  
Tel.: +34 945 18 00 02 • Atención al Cliente  
Fax: +34 945 30 01 53  
E-mail: [ventas@atusa.es](mailto:ventas@atusa.es)  
[www.atusa.es](http://www.atusa.es)

